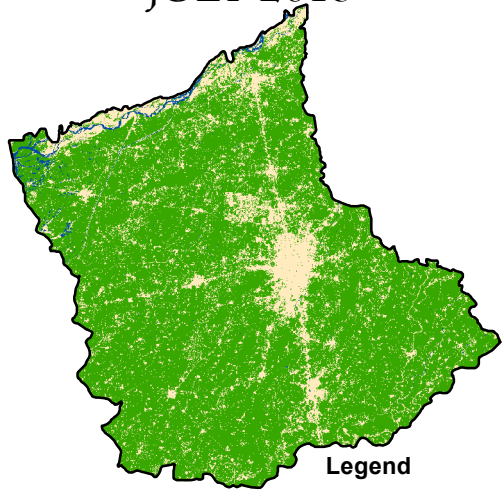
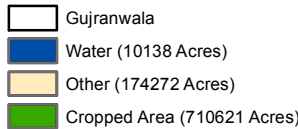


# FLOOD SITUATION OF GUJRANWALA DISTRICT, 2013

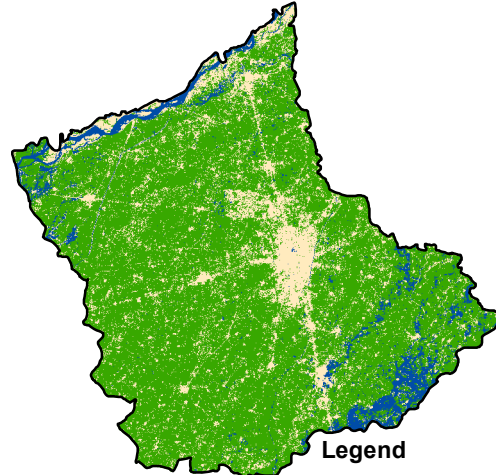
JULY 2013



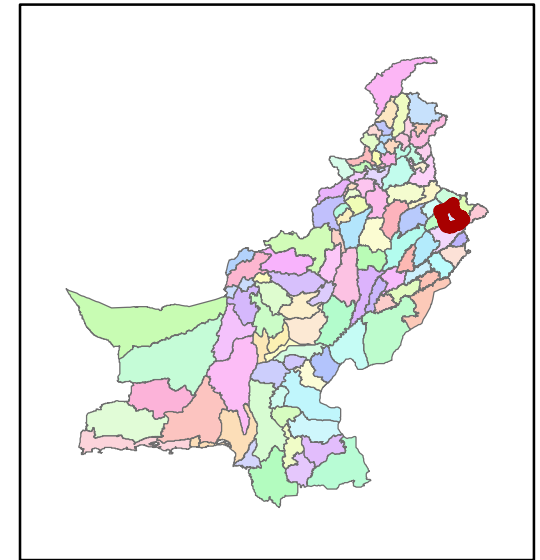
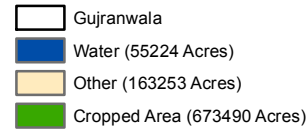
Legend



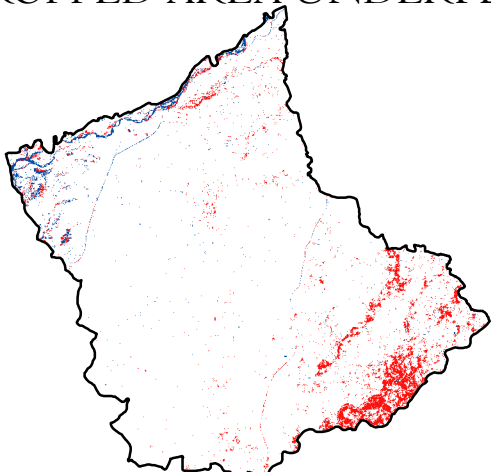
AUGUST 2013



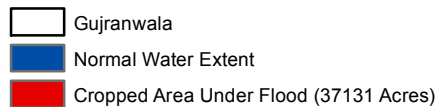
Legend



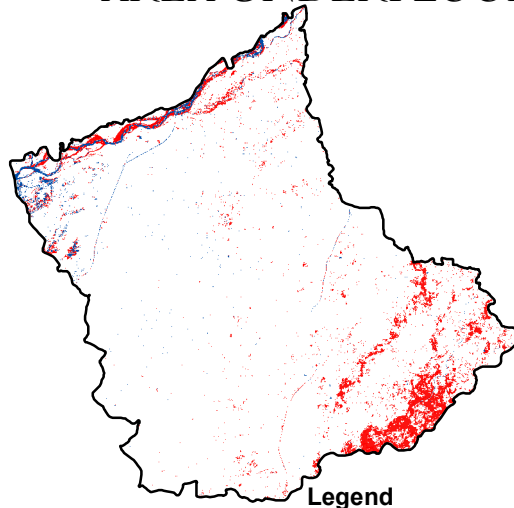
CROPPED AREA UNDERFLOOD



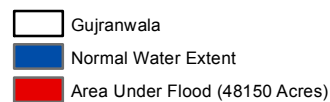
Legend



AREA UNDERFLOOD



Legend



**CROPPED AREA**  
**(JULY 2013) = 710621 Acres**  
**(AUGUST 2013) = 673490 Acres**  
**TOTAL CROPPED**  
**AFFECTED AREA = 37131 Acres**  
**5.23 % OF THE TOTAL**  
**CROPPED AREA IS AFFECTED**

